



evolution⁷

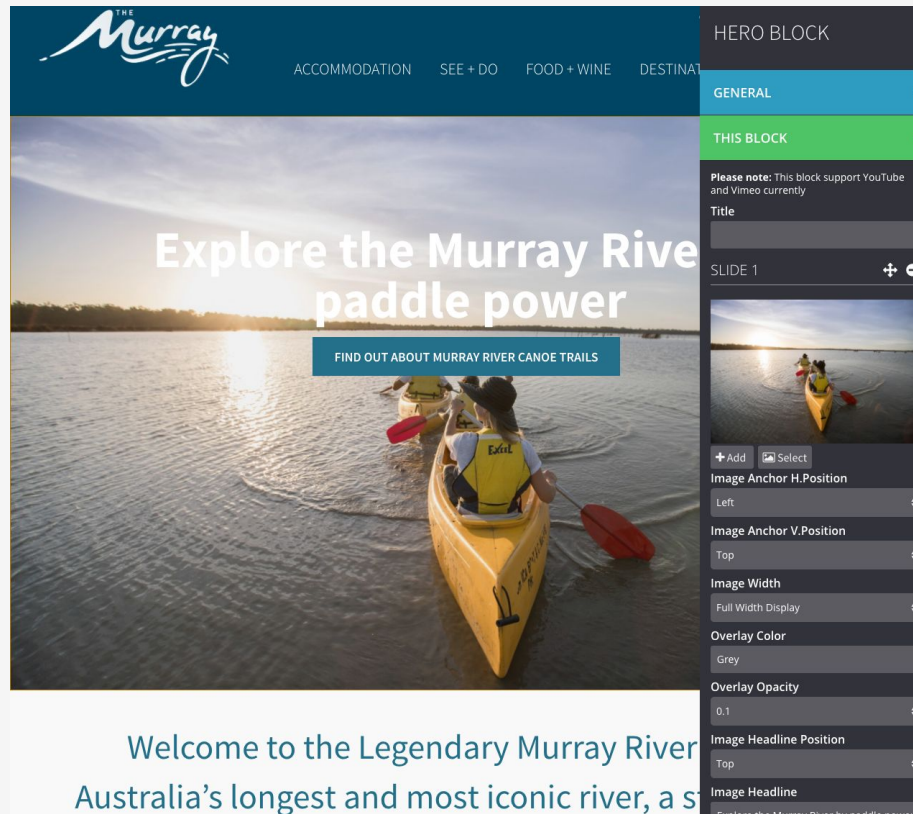
Murray Regional Tourism

Viisit - New Block Guide

1.Hero block

Hero Block

Step	Action - Editing the hero
1	Open the configuration menu for this block. This block behaves in a similar way to the Multimedia Block with a few exceptions.
2	<p>The configuration menu contains the following tabs:</p> <p>General tab - This is used to assign the active block to specific breakpoint/s for various devices and browsers, There are four breakpoints Large, Medium, Small & Extra small. By default, all breakpoints are selected.</p> <p>Block tab - For the hero, this is where the image and accompanying text is controlled, including the button text and corresponding URL. Multiple hero images can be selected for rotation by clicking 'add slide'</p>

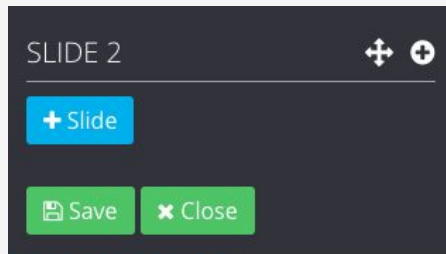


Hero Block

Step	Action - Adding images
3	<p data-bbox="330 290 1023 314">Populate the block with an image within the This block tab:</p> <p data-bbox="330 355 683 380">This can be done in two ways:</p> <p data-bbox="330 421 533 445">i. Add new image</p> <ul data-bbox="363 452 1773 639" style="list-style-type: none"><li data-bbox="363 452 687 476">● Click the + Add button<li data-bbox="363 482 1126 506">● A popup will appear. Choose an image from your computer.<li data-bbox="363 513 1773 574">● Add the site and relevant tags you would like to apply to this image. Following upload, this will now be stored in the website's media library<li data-bbox="363 580 571 604">● Click Create<li data-bbox="363 611 1273 639">● The thumbnail of the selected image will display above the + Add button <p data-bbox="330 679 813 703">ii. Select an image from the media library:</p> <ul data-bbox="363 709 1731 832" style="list-style-type: none"><li data-bbox="363 709 649 733">● Click Select button<li data-bbox="363 740 1447 764">● A popup will appear which will display the list of available “Default” and “ATDW” media.<li data-bbox="363 770 1731 794">● Filters are available to search media based on “Name, Provider reference, Enabled, context and Provider name”<li data-bbox="363 801 1166 832">● Once you select an image a thumbnail of this image will display

Hero Block

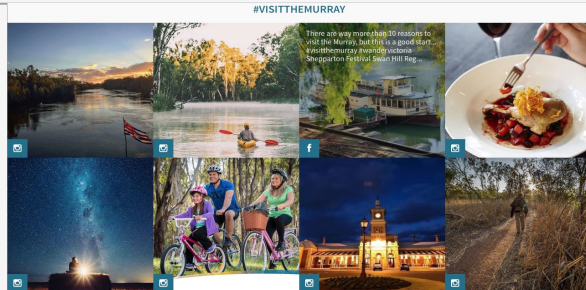
Step	Action - Adjusting the hero image
4	<ul style="list-style-type: none">• Overlay colors on top of the hero image can be specified in the 'overlay color'. These are to be entered as HEX codes, beginning with #. For example #000ff• The opacity of the overlay color can be controlled via the 'Overlay opacity' field. This is a dropdown field with 0 being no opacity and 0.9 being the highest• Two button fields are available, primary and secondary buttons• The 'x button' field is where the text you would like to display is entered• The 'x button URL' field is where you enter the link that you want this button to direct to.• <i>Note: Add "http://" for external URLs when linking the button URL</i>
5	<ul style="list-style-type: none">• Once other fields have been completed, hit save at the bottom of the menu to save your image as the new hero• Click close to complete your work on this block





2.Grid Block

Grid Block

Step	Action - Adding and editing the block
1	<ul style="list-style-type: none">This block allows admin users to assigned general content or social post posts to each box container within the 8 box grid.To insert this block, open the block options using the left hand side hamburger menu
2	<ul style="list-style-type: none">The block consists of two rows of either 3 or 4 boxes. Each box houses a single piece of content chosen by the content administrator.Note: A minimum of four feed items should be available to display in a grid row. <p>For example:</p> <ol style="list-style-type: none">If four feeds are supplied then one row of four grid boxes will display.If eight feeds are supplied then two rows of four grid boxes will display. *when using a default 4 box row.





RICH TEXT

MULTIMEDIA

PRODUCTS

SIMPLE IMAGE

HERO BLOCK

GRID BLOCK

Grid

Add a Social Block to a page and configure Social Feeds and its display settings.

Grid Block

Step	Action - Adding social feed content
3	<ul style="list-style-type: none">• Add block title text using the Title field displaying in General settings tab.• Expand the block you want to work with by clicking on the + of the relevant box
4	<p>Select a content type from Feed settings. There are two options:</p> <ul style="list-style-type: none">a. Social contentb. Custom content <ul style="list-style-type: none">• If selecting social content - a popup window will appear with each available social feed presented as a tab along the top.• Select the social channel you wish to select from. The currently imported content will appear.• Hit select to use this post.• On the RHS, there is a 'funnel' selector. Use this to select content from the relevant destination's social feed. <p><i>Note: Social feeds are supplied through the Social Aggregator. The available channels are Youtube, Facebook, Twitter and Instagram.</i></p>

Grid Block

Step	Action - Adding custom content
5	<p>If Custom content option selected the following fields display:</p> <ul style="list-style-type: none">• Image• Title• Description• URL.
6	<p>Add or select an image: To add new image:</p> <ol style="list-style-type: none">a. Click the + Add buttonb. An image upload modal displays allowing you to upload an image from your computer.c. Click Created. The thumbnail of the selected image will display above the + Add button. <p>To select an image from the media library:</p> <ul style="list-style-type: none">• Click the Select button• A Image Select modal will appear which will display the list of available “Default” and “ATDW” media.• Filter are available to search media based on “Name, Provider reference, Enabled, context and Provider name”• Once you select an image a thumbnail of this image will display.

Grid Block

Step	Action - Adding custom content
7	<ul style="list-style-type: none">• Click the Save button to update the entered details• Click close

3.General Content Cards

General Content Cards

EXPLORE THE MURRAY



FAMILY FUN

It's not always easy to keep everyone (kids and adults alike) entertained on a holiday, but the Murray excels. By connecting with nature, a holiday here has a knack of bringing families together through shared experiences. Find out more now!



FOOD & WINE

Taste the Murray with rolling vineyards, farmers' markets, riverside picnics and food and wine trails are key ingredients in the character of the Murray, one of Australia's great 'food bowls'. Find your favourite restaurant or winery today!



HISTORY & HERITAGE

The Murray is an ancient place, with a living, breathing heritage. It's a place of legendary tales, trials and triumphs for you to experience in the historic towns, museums, walking tours, riverboat cruises and heritage areas. Experience the Murray's history.



EVENTS & FESTIVALS

The Murray is a legendary place to revel in authentic Aussie culture, great music festivals and sporting prowess. Find out all you need to know about the great range of Murray events that will be a highlight of your holiday.

General Content Cards

Step	Action - Adding and Editing the block
1	<ul style="list-style-type: none">• Open the configuration menu for this block. Adding, and accessing the configuration menu is achieved through the same steps as the above blocks
2	<ul style="list-style-type: none">• The block allows the user to select media and add customised title and description.• <i>Note: Only (1) to (8) slides can be added to this block. By default it will display (3) slides.</i>
3	<p>The configuration menu contains the following tabs:</p> <p>‘General’ tab - This used to assign the selected block to specific breakpoint/s, There are four breakpoints Large, Medium, Small & Extra small. By default all breakpoint are selected.</p> <p>‘This Block’ tab - On clicking this block it will display block settings</p>

General Content Cards

Step	Action - Block settings
4	<ul style="list-style-type: none">• Add block title text using the Title field displaying in Block settings tab.• <i>Note: Title can be enabled/disabled using Enable block title checkbox. Default option is enabled.</i>
5	<ul style="list-style-type: none">• The block allows the user to select media and add customised title and description.• <i>Note: Only (1) to (8) slides can be added to this block. By default it will display (3) slides.</i>
6	<p>Select block type from Block type dropdown available in Block settings tab.</p> <p>There are two types</p> <ol style="list-style-type: none">1. Simple cards2. Detailed cards <p><i>Note: When you select Simple cards, the description text will not display in blocks. The default option is Detailed cards.</i></p>

The screenshot shows the 'GENERAL CONTENT CARD' settings interface. At the top, there are two tabs: 'GENERAL' (highlighted in blue) and 'THIS BLOCK' (highlighted in green). Below the tabs is a 'SETTINGS' section with a minus icon. The settings include: 'Title' with a text input field containing 'EXPLORE THE MURRAY'; 'Enable Block Title' with a checked checkbox; 'Block Type' with a dropdown menu showing 'Detail cards'; 'Number Of Columns' with a dropdown menu showing '4'; 'Number Of Rows' with a dropdown menu showing '1'; 'Button Text' with a text input field; 'URL' with a text input field; and 'URL Target' with a dropdown menu showing 'Same window'.

General Content Cards

Step	Action - Editing the block
7	<ul style="list-style-type: none">• Select number of columns to display from Number of columns dropdown available in Block settings tab• Select number of rows to display from Number of rows drop down available in Block settings tab
8	<p>Enter the required details in the fields for each slide.</p> <p>i. Add new image</p> <ul style="list-style-type: none">• Click the + Add button• An Image Upload modal will appear. Choose an image from your computer.• Click Create• The thumbnail of the added image will display above the + Add button <p>ii. Select an image from the media library:</p> <ul style="list-style-type: none">• Click the Select button• An Image Select modal popup will appear. It displays all media stored in the Media Library for the site. It includes user uploaded media and ATDW media.• Filters are available to search media.• The thumbnail of the selected image will display above the + Add button <p>iii.</p> <ul style="list-style-type: none">• Click remove to remove the current image and start over

General Content Cards

Step	Action - Editing the block
9	<ul style="list-style-type: none">• Add alt text in the Alt text field in the Basic Settings tab.• The alt attribute provides alternative information for an image if a user for some reason cannot view the image eg. slow network connection• Add image title text using the Image title field in the Basic Settings tab.• Add an image/title link by inserting a URL in the URL field in the Basic Settings tab.• <i>Note: Add “http://” for external URLs. Simply add “/page-name” for internal pages.</i>• Select the target window from the URL target dropdown in the Basic Settings tab.
10	<ul style="list-style-type: none">• Add an image description using the Description field in the Basic Settings tab.• <i>Note: This is the description that will accompany the image on the front end, visible to the user.</i>• Click the Save button to update the entered details.• Click Close.

4. Rich Text Block

Rich Text Block



All along the Murray river are delightful wine regions, from large-scale producers to boutique cellar doors producing crisp whites and full-bodied reds. You can even combine a winery visit with a **paddleboat cruise** – a quintessential Murray experience.

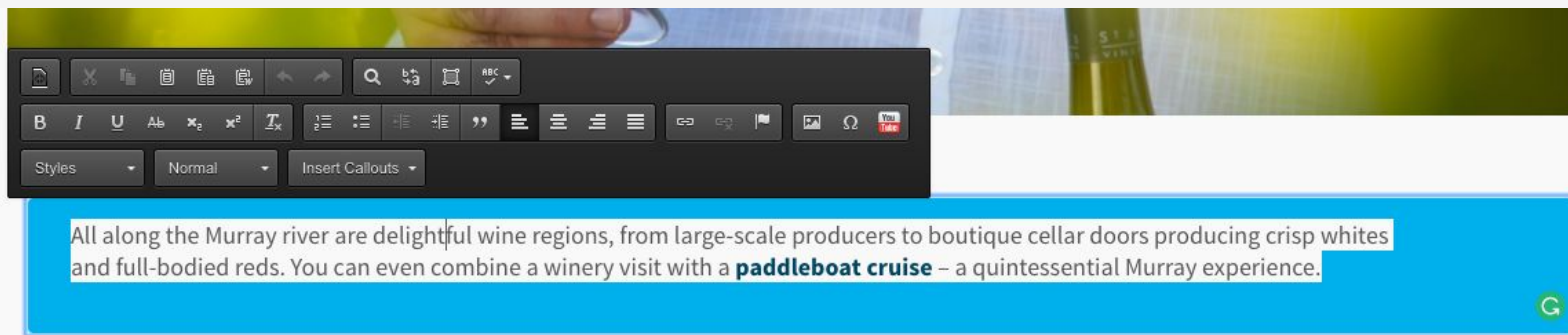
[STAY](#)

SEE + DO

FOOD + WINE

Rich Text Block

Step	Action - Adding and Editing the block
1	<ul style="list-style-type: none">• Open the configuration menu for this block. Adding, and accessing the configuration menu is achieved through the same steps as the above blocks• Alternatively, Click the text within any Rich Text block in the page.• The Rich Text Editor <i>displays</i>.
2	<ul style="list-style-type: none">• Refer to 'Rich Text Block inline editor' for a summary of the options available in the in-line editor.



Rich Text Block

Step	Action - Adding and Editing the block
3	<ul style="list-style-type: none">• Select the appropriate paste option when entering text so as to avoid adding unwanted styles. <p>Useful paste options include:</p> <ul style="list-style-type: none">• Paste as plain text• Paste from Word
4	<ul style="list-style-type: none">• Use the inline editor in the same way as the style toolbar in MS-Word.• Click out of the box when you have completed editing the text. When the page is published, this will appear on the live site.

5.Events Block

Events Block

COMING EVENTS



1 APR 2017 TO 2 APR 2017

CFA STATE RURAL CHAMPIONSHIPS

Fire Brigade Championships have been conducted in Victoria by Volunteers since the Gold Rush years of the 1850's and have continued on ever since....

MORE +

ADD ☆



7 APR 2017 TO 9 APR 2017

HENTY ART AND PHOTOGRAPHY EXHIBITIO...



15 APR 2017 TO 15 APR 2017

AUSTRALIAN BILLY CART CHAMPIONSHIPS



14 APR 2017 TO 17 APR 2017

COROWA EASTER GOLF TOURNAMENT



15 APR 2017 TO 15 APR 2017

QUAMBATOOK TRACTOR PULLERS - AUSTRA...

Events Block

Step	Action - Adding and Editing the block
1	<ul style="list-style-type: none">Open the configuration menu for this block. Adding, and accessing the configuration menu is achieved through the same steps as the above blocks
2	<p>The Block settings tab allows content admins to select operators:</p> <ul style="list-style-type: none">By name. Refer to step 5 for details.By date. Refer to step 6 for details.By tag. Refer to step 7 for details. <p><i>NOTE: A minimum of 1 operator needs to be selected to display in the block.</i></p>
3	<ul style="list-style-type: none">Add block title text using the Title field in the Block settings tab. <p><i>Note: The title can be enabled or disabled using the checkbox option</i></p>
4	<p>To locate operators, you can display the Browse all button. Enable the checkbox “Show Browse all” which is available in the Block settings tab.</p> <p><i>Note: The button is enabled by default.</i></p>

Events Block

Step	Action - Adding and Editing the block
5	<ul style="list-style-type: none">• To select an event By Name:• Choose one or more operators manually by typing directly into the Select By Name field. Operator names will appear as you type letters into the field.
6	<p>To select an event By Date:</p> <ol style="list-style-type: none">a. Choose a date from the date picker. It will display the operators that fall on the chosen date.b. Select an event By Name, Refer to the previous step.
7	<p>To select an event by Event Tag:</p> <ol style="list-style-type: none">a. Ensure that tags have been created and assigned to selected operators in the Admin Panel.b. Choose one or more tags manually by typing directly into the Event Tag field.
8	<ul style="list-style-type: none">• Click the Save button to update the entered details.• Click close

6.Subscription Block

Subscription Block

STAY UPDATED

Subscribe to our mailing list to keep updated on promotions, competitions and things to do and see along the legendary Murray River.

FIRST NAME

FIRST NAME

LAST NAME

LAST NAME

EMAIL

YOUR EMAIL

SUBMIT

Subscription Block

Step	Action - Adding and Editing the block
1	<ul style="list-style-type: none">Open the configuration menu for this block. Adding, and accessing the configuration menu is achieved through the same steps as the above blocks
2	<ul style="list-style-type: none">The configuration menu contains the following tabs: General tab This used to assign the selected block to specific breakpoints This Block tab On clicking this block it will display setting options
3	<ul style="list-style-type: none">Add block title text using the Title field in the Block settings tab. <p><i>Note: The title can be enabled or disabled using the checkbox option</i></p>
4	<ul style="list-style-type: none">Add description text using the Description field in the Block settings tab. This will appear under the title and introduce users to the purpose of the form <p><i>Note: Description can be enabled or disabled using the checkbox. By default it is enabled.</i></p>

Subscription Block

Step	Action - Adding and Editing the block
5	<ul style="list-style-type: none">• Add success message text using the Success Message field in the Block settings tab. <p>*This is what the user will see once they have completed the sign up form (See below)</p>
6	<ul style="list-style-type: none">• Click the Save button to update the entered details.• Click Close

Thank you

STAY UPDATED

Subscribe to our mailing list to keep updated on promotions, competitions and things to do and see along the legendary Murray River.

FIRST NAME

FIRST NAME



LAST NAME

LAST NAME



EMAIL

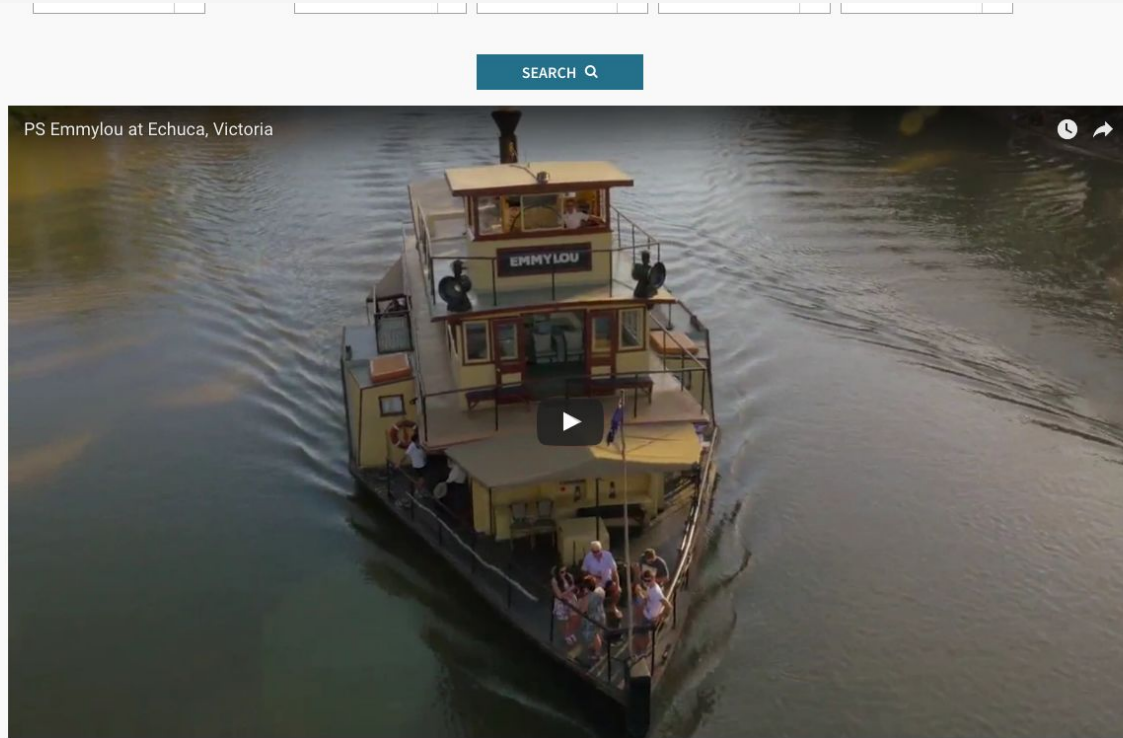
YOUR EMAIL



SUBMIT

7.Multimedia Block

Multimedia Block



Touring Itinerary

Multimedia Block

Step	Action - Adding and Editing the block
1	<ul style="list-style-type: none">• Open the configuration menu for this block. Adding, and accessing the configuration menu is achieved through the same steps as the above blocks
2	<p>In the 'General' tab, specify the breakpoint/s that will display the currently selected block:</p> <ul style="list-style-type: none">• Select 'Large' to display the block on 'Desktops & TVs'• Select 'Medium' to display the block on 'Laptops & Large tablets'• Select 'Small' to display the block on 'Small & Portrait tablets'• Select 'Extra Small' to display the block on 'Smart Phones'.
3	<ul style="list-style-type: none">• Upon opening the 'This Block' tab, you will be presented with a range of options to manage the 'slideshow', if a range of images are present. See next page for an overview of options and their meanings

Multimedia Block

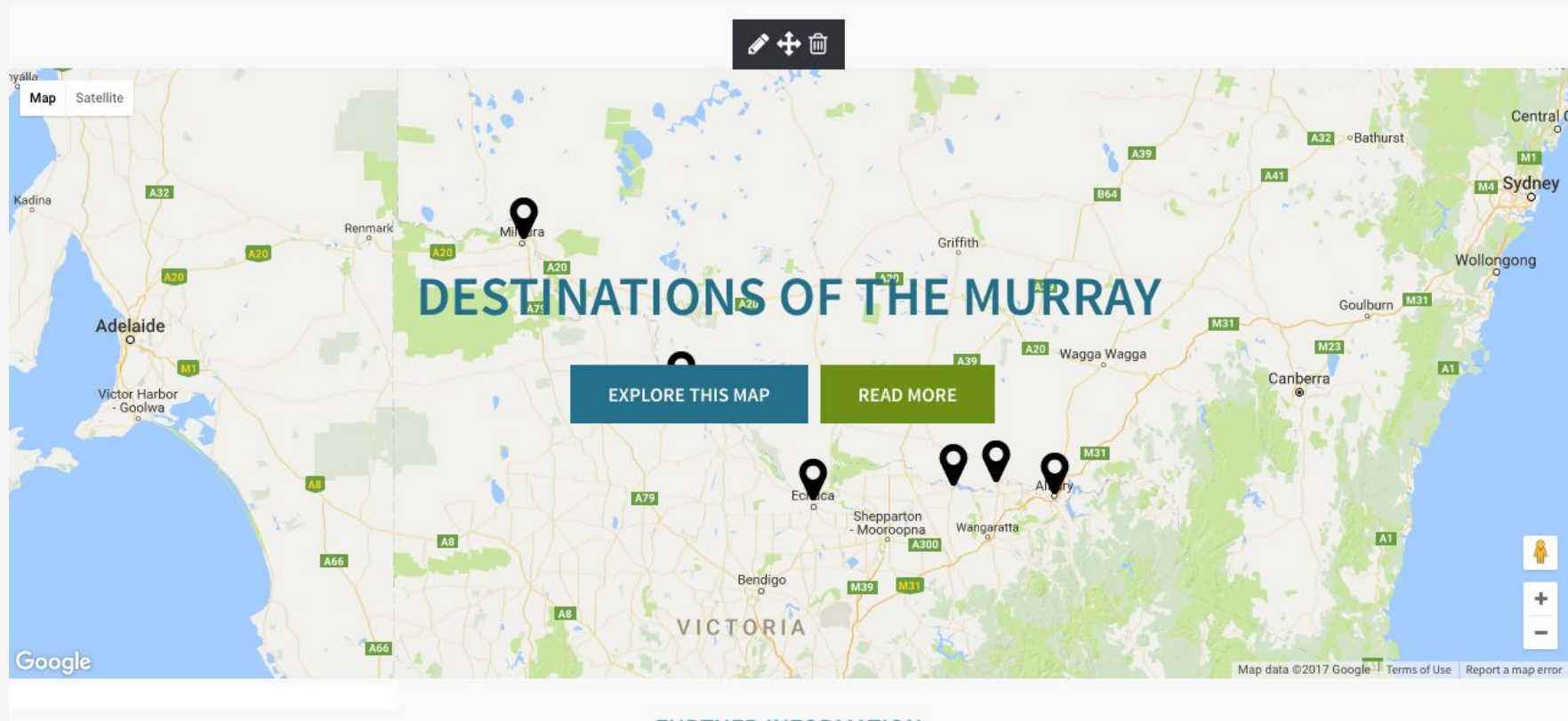
Step	Action - Adding and Editing the block
4	<ul style="list-style-type: none">• Aspect Ratio: Specify the aspect ratio for media block:• Direction Nav: Enable or disable directional navigation for a gallery• Transition Specify the transition for a gallery (Slide or Fade)• Speed (ms) Control gallery sliding speed (milliseconds)• Progress Bar Enable or disable a progress bar for a gallery• Progress Bar alignment Set the alignment of the progress bar for a gallery (left or centre)• Additional CSS Class Provide custom CSS if required• Default slide show Enable or disable default slide show settings for a gallery

Multimedia Block

Step	Action - Managing each media item
5	<ul style="list-style-type: none">• Expand the slide you wish to work on to see options for managing that specific media element.• Images and video can be added by either uploading from your computer or selecting from the existing media library.
6	<p>i. Add new image/video</p> <ul style="list-style-type: none">• Click the + Add button• An Image Upload modal will appear. Choose an image from your computer.• Click Create• The thumbnail of the added image will display above the + Add button <p>ii. Select an image/video from the media library:</p> <ul style="list-style-type: none">• Click the Select button• An Image Select modal popup will appear. It displays all media stored in the Media Library for the site. It includes user uploaded media and ATDW media.• Filters are available to search media.• The thumbnail of the selected image will display above the + Add button
7	<ul style="list-style-type: none">• Image title and the corresponding URL can be applied if required. This works in a similar way to the hero block, where buttons will appear over the image if button text is entered. <p><i>Note: Add “http://” for external URLs.</i></p>

8.Campaign Map Block

Campaign Map Block



Campaign Map Block

Step	Action - Editing the splash screen and technical functions
1	<ul style="list-style-type: none">The area map uses Google maps to display several map pips and an information panel.
2	<ul style="list-style-type: none">Splash Screen settings <p>This expandable section gives you control over what appears on the front end of the site and visible to the user</p> <ul style="list-style-type: none">Title: This is the overlay title that will appear on your map, for example “Destinations of the Murray”The Primary and Secondary CTA fields in this scenario are for the primary and secondary buttons that will display below the title.The primary CTA will always serve as a function for the user to interact with the Google Map, so no URL field is presentThe secondary CTA field has a corresponding URL field, this allows you to link away from the map to a relevant section of the site (or off-site) to provide the user with additional information.)
3	<p>Upon expanding the Map Settings tab, you will be presented with a range of technical options and adjustments for when the user interacts with the map</p> <ul style="list-style-type: none">Lat/Lng: This allows you to specify the point at which the map will centre at the start of the user’s journeyBack CTA: If enabled, this will display a button saying ‘Back to Home’ for the user to return to the central point of the map with the CTA buttons and title re-displayedMouse scrolling: This allows the user to scroll the zoom in and out using the mouse. Disabling this is often preferred, as the user can easily interact with the map, and then scroll to continue on their journey down the homepageDistance from Melbourne: When a user interacts with an admin specified map pip (see next page) this will show the distance of this location from Melbourne.

Campaign Map Block

Step	Action - Editing the locations
4	<ul style="list-style-type: none">• Locations can be manually added to the map by the admin, with their lat/Ing, title, description and CTA link included
5	<ul style="list-style-type: none">• Image: A thumbnail image of the location can be added via the usual add/select tools. If no image is selected, no image will display in the description box.• Title: This field will populate the title in the box that appears when a user clicks on a specific map pip. This should be the title of the location.• Description: This field is the text that will appear when a user clicks on a specific map pip. This text should be kept to around 30 words to ensure the box doesn't expand too much.• CTA: By default, the CTA button will say 'More'. The CTA field allows the admin to specify the internal or external page this button links to. <p><i>Note: Add "http://" for external URLs.</i></p>
6	<ul style="list-style-type: none">• Click the Save button to update the entered details.• Click Close

9.Simple Image Block

Simple Image Block

Source: <http://www.mdba.gov.au/wnat-we-do/education/students/run-and-games/kids-memory-game>



Simple Image Block

Step	Action - Adding and Editing the block
1	<ul style="list-style-type: none">Open the configuration menu for this block. Adding, and accessing the configuration menu is achieved through the same steps as the above blocks
2	<ul style="list-style-type: none">In the 'General' tab, specify the breakpoint/s that will display the currently selected block:
3	<p>Populate the block with an image within the This block tab:</p> <p>This can be done in two ways:</p> <p>i. Add new image</p> <ul style="list-style-type: none">Click the + Add buttonA popup will appear. Choose an image from your computer.Add the site and relevant tags you would like to apply to this image. Following upload, this will now be stored in the website's media libraryClick CreateThe thumbnail of the selected image will display above the + Add button <p>ii. Select an image from the media library:</p> <ul style="list-style-type: none">Click Select buttonA popup will appear which will display the list of available "Default" and "ATDW" media.Filters are available to search media based on "Name, Provider reference, Enabled, context and Provider name"Once you select an image a thumbnail of this image will display

Simple Image Block

Step	Action - Adding and Editing the block
4	<ul style="list-style-type: none">Image link and the corresponding URL can be applied if required. This allows a user to click on the image and be directed to a different location. This is useful if using this block as a campaign advertising banner. <p><i>Note: Add "http://" for external URLs.</i></p>
5	<ul style="list-style-type: none">Add alt text in the Alt text field in the Basic Settings tab.The alt attribute provides alternative information for an image if a user for some reason cannot view the image eg. slow network connection
6	<ul style="list-style-type: none">Click the Save button to update the entered details.Click Close

10.Product Block

Product Block

SOME HOTELS ALONG THE MURRAY



MULWALA

ASHLEIGH COURT MOTOR INN

Ashleigh Court Motor Inn offers 11 spacious units located...

MORE +

ADD ☆



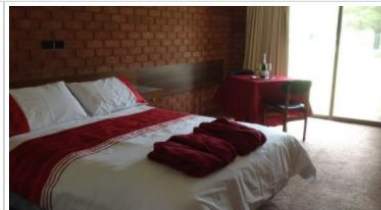
BAROOGA

BAROOGA COUNTRY INN MOTEL

Barooga Country Inn Motel is nestled in the premium fruit and...

MORE +

ADD ☆



BERRIGAN

BERRIGAN MOTEL

Berrigan Motel is a 21 room facility in Berrigan, New South...

MORE +

ADD ☆



MOAMA



TOCUMWAL



YARRAWONGA

Product Block

Step	Action - Adding and Editing the block
1	<ul style="list-style-type: none">• Open the configuration menu for this block. Adding, and accessing the configuration menu is achieved through the same steps as the above blocks
2	<ul style="list-style-type: none">• In the 'General' tab, specify the breakpoint/s that will display the currently selected block:
3	<p>In the 'This Block' tab, a range of options are available for the overall block, before going into the individual operator cards:</p> <ul style="list-style-type: none">• List option: This allows the admin to specify if this block should be displayed as a list, a card view or a map view. Card views are displayed in rows of three operators. It would be advised to have the operators added in multiples of 3 for consistency in the display• Title: This block is optional but is selected as default. By adding a title, this will appear once at the top of the list. By disabling this option, the cards/list will display without any introduction.• Operator max limit: Operators will be selected and displayed relative to their categorical assignments. If only a small number of operator cards are to be displayed, then this field can be customised to reduce the number of operators present.

Product Block

Example of the map view of featured products

LOCATION OF SOME OF THE HOTELS ALONG THE MURRAY!



Product Block

Step	Action - Editing operator listings
4	<ul style="list-style-type: none">Upon expanding the 'Operators' tab, a list of options will be presented for operator types
5	<ul style="list-style-type: none">Depending on the operator categories the admin wishes to display, tags and titles will be selected only within these categories. For this example, only Accommodation operators are present:

The screenshot shows the 'Operators' tab in the MRTB interface. The 'Operators' tab is expanded, showing a list of operator categories. The 'Accommodation' category is selected, indicated by a minus sign icon. Below the category list, there are two search filters: 'Select By Title' and 'Select By Tag'. The 'Select By Tag' filter shows a tag 'Hotels/Motels' selected. At the bottom, there are 'Save' and 'Close' buttons.

GENERAL	>
THIS BLOCK	>
OPERATORS	>
ACCOMMODATION	-
Select By Title	
<input type="text"/>	
Select By Tag	
<input type="text" value="Hotels/Motels"/>	
ATTRACTION	+
EVENT	+
RESTAURANT	+
TOUR	+
TRANSPORT	+
HIRE	+
INFO	+
<input type="button" value="Save"/> <input type="button" value="Close"/>	

Product Block

Step	Action - Editing operator listings
6	<ul style="list-style-type: none">Once the operator type you wish to add has been expanded, you can select to bring through operators by either a specific name (to feature pre-defined operators) or by tag.
7	<ul style="list-style-type: none">When selecting by title, if you click into the field or begin typing, a populated list of available operators will appear in a drop down to assist with search and selection.
8	<ul style="list-style-type: none">As with above, in the tag section if you click into the field or begin typing, a populated list of available tags will appear in a drop down to assist with search and selection. <p><i>*Note, tags must be defined in the back end for this feature to work and pull through operators.</i></p>
9	<ul style="list-style-type: none">Click the Save button to update the entered details.Click Close

Thank you.

Please get in touch if you have any further questions.